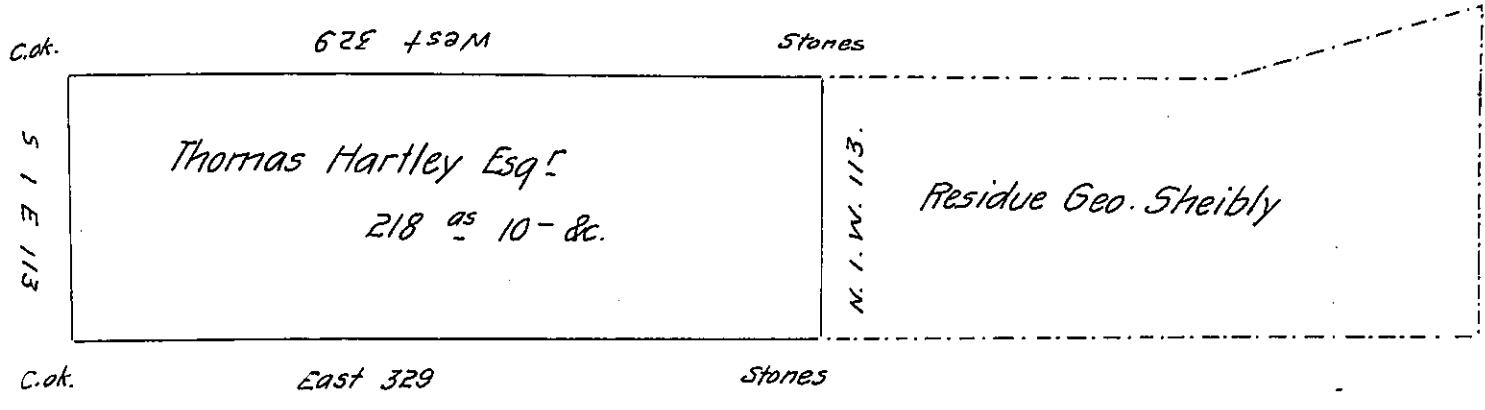


Christian & Geo. Sheibly



Jacks Mountain

A Draft of two hundred and eighteen acres and ten perches and the usual allowance &c. and is part of a larger tract of 418 ac & 100 perches &c. Surveyed the 6th day of May 1835 in pursuance of a warrant granted to Thomas Hartley dated the 25th day of January 1794. Situated in Hartleton township Union County

Pr. Robert O. H. Hayes D. S.

To Jacob Spangler Esqr

Surveyor General Penn.

IN TESTIMONY that the above is a copy of the original remaining on file in the Department of Internal Affairs of Pennsylvania, made conformably to an Act of Assembly approved the 16th day of February, 1833, I have hereunto set my Hand and caused the Seal of said Department to be affixed at Harrisburg, this ninth day of May 1905

[Signature]
 Secretary of Internal Affairs.